

GRACO CORPORATION



PRODUCT
CATALOG

FOR THE SHOOTER THAT DEMANDS THE BEST

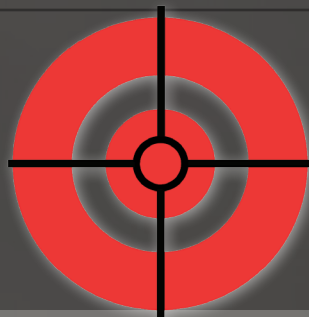
**SINCE
1986**

GRACO
CORPORATION

At GRACO our policy is to make quality
a priority and satisfaction our guarantee.
We believe our customers deserve the
best, and we strive for nothing less.



*WE ARE A MASTER
DISTRIBUTER OF*



KICK EEZ[®]
Sorbothane[®]
RECOIL PAD



GRACO GRACOIL RECOIL REDUCTION SYSTEM

The GraCoil Recoil Reduction System adds adjustability and will take your shooting game to an all new level. Precision engineering and craftsmanship make GraCoil the best solution for your recoil needs. A GraCoil system plus a recoil pad can reduce your recoil upwards of 65 percent. The adjustable tension settings on the GraCoil are made to fit any shooter's style.

GUN FIT WITH A FACTORY STOCK

Length of pull is one of the most important aspects when determining whether the firearm will fit you correctly and puts the butt of the gun in the shoulder pocket the same every time.

While factory stocks on shotguns fit some people, they do not fit everyone. The length of the stock is often too long or short for the shooter. Proper gun fit will allow your master eye to look straight down the rib at the correct height for your point of impact.

These adjustments can be made with adjustable butt plates and adjustable combs by modifying a factory shotgun stock .

When you get a good gun fit, it is east to mount the gun in the shoulder pocket each time so that your head-to-stock contact has better consistency.

WORLD CLASS INSTALLERS IN HOUSE

FACTORY INSTALLATIONS

At Graco Corporation, we not only manufacture our products, we also install them. The skilled craftsmen in our Customs Department make installations and modifications of shotguns daily, with the closest fit of metal to wood. Please call for questions, turn around time, price and delivery. You will find our customer service second to none.

Information that we need

1. Name & shipping address
2. Daytime phone number
3. Type of hardware
4. Type of recoil pad
5. Length of pull measurement*
6. Right or Left shooter

*In some cases we will need the receiver with trigger.

Go to www.graco-corp.com and fill out the form under the customs tab.

479-787-6520

*FOR THE SHOOTER
THAT DEMANDS THE BEST*

COUNTER WEIGHTS

COUNTER WEIGHTS FOR BALANCE AND SWING

Barrel Weight Kit • Stock Weights • Forend Cap Weights

These units are designed to give the shooter more muzzle control and a smoother 'swing-thru' when taking the gun to the target or when better gun balance is needed. Counter weights also help keep the muzzle down during firing.



Complete Barrel Weight Kit Installed (shown)

BARREL WEIGHT KIT

Easy to install. Our Barrel Weight Kit includes a barrel clamp and three different weights to choose from. The 4 oz., 6 oz. and 8 oz. weights are polished, blued steel. The clamp is lined with a non-slip tape to protect the barrel. Also included are two adapters to fit the unit to a 20 ga., 28 ga. and .410 ga. barrel.

2 oz., 3 oz. and 10 oz. weights are also available.



*Barrel Weight Kit
8 oz., 6 oz., and 4 oz.
weights shown*

STOCK WEIGHTS 390 & 391

The stock weight will add weight and balance. When used with the 390, 391 or A400 counter weight, the stock weight is capable of returning the gun back to its factory balance.

Specifically designed to fit the 390, 391 and A400.
Available in 5 oz., 7 oz., 10 oz. and 12 oz.

Easy to install, just unscrew the stocknut and screw on the stock weight. Polished, blued steel.



*Model 390SW - 7 oz.
Stock Weight (shown)*

FOREND CAP WEIGHTS

All units weigh 8 oz. and are polished, blued steel.

Easy to install, just unscrew the forend cap and screw on the counter weight.

Available as follows:

Model 88BG - Fits the Browning Gold

Model 88R - Fits the Remington 870 & 1100

Model 88S - Fits the Benelli Super Black Eagle

Model 88 - Fits the Benelli Black Eagle Competition & Montefeltro Super 90

Model 390 - Fits Beretta 390

Model 391 - Fits Beretta 391

Model A400 - Fits Beretta A400

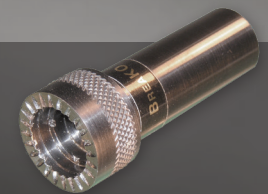
Model 8UCW Universal Cap Weight



Cap Weight 391



Cap Weight A400



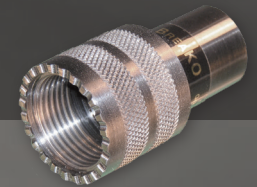
Cap Weight 88



Cap Weight 88BG



Cap Weight 88R



Cap Weight 88S

ADJUSTABLE COMB HARDWARE GETTING YOUR "POINT OF IMPACT" ON TARGET

Factory Replacement • Installation Hardware

Graco offers the proper hardware needed to make adjustable rifle and shotgun combs. The Rectangle base plate is strong and trouble free. Round base plates are designed for the stock maker who needs a different center to center dimension or for working with a thin stock.

Base plates and comb bushings are made of aircraft aluminum. The posts, screws and nuts are all stainless steel, for a rust-free working unit. Wrenches are included.

Our brass hardware features easy to see gradation lines, for the exact repeat setting of left and right adjustments.

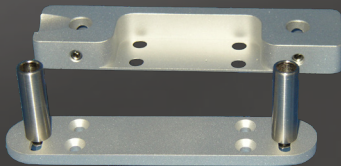


Inside View of Adjustable Comb

FACTORY REPLACEMENT HARDWARE

Replacement hardware for the Beretta 'Memory System'. Simply drop-in and use the same screws. 420 requires 2 holes drilled to access locking screws. The 4-way adjustable units are solid and trouble free.

Model 500B - fits Beretta 'break open' guns
500B/A - fits Beretta 'semi-auto' guns
Model 420 - Browning Replacement

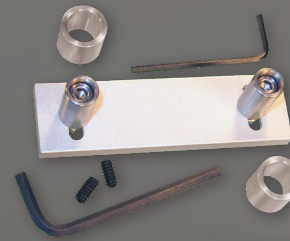


MODEL 420

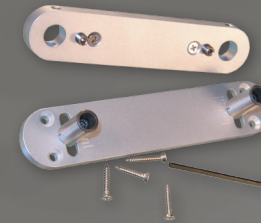


MODEL 500B and MODEL 500B/A

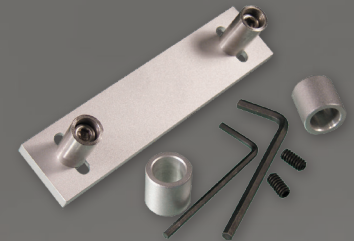
INSTALLATION HARDWARE



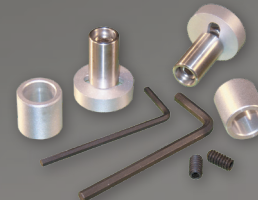
MODEL 350
Base plate dimension:
 $\frac{1}{4}$ " x 1" x 3 $\frac{1}{2}$ "



MODEL KS5
Factory Style Krieghoff
 $\frac{3}{16}$ " x 1" x 3 $\frac{1}{2}$ "



MODEL 425
Base plate dimension:
 $\frac{1}{4}$ " x 1" x 4 $\frac{1}{4}$ "



MODEL 870
Base plate dimension:
 $\frac{1}{4}$ " x $\frac{7}{8}$ " round



MODEL 350D (Brass)
Base plate dimension:
 $\frac{1}{4}$ " x 1" x 3 $\frac{1}{2}$ "



MODEL 1000
Base plate dimension:
 $\frac{1}{4}$ " x 1" round



MODEL 1000 D
Base plate dimension:
 $\frac{1}{4}$ " x 1" round



Complete Adjustable
Comb Assembly Shown

FACTORY INSTALLATION AVAILABLE

The GraCoil

RECOIL NEVER FELT BETTER

Length of Pull GraCoil • Standard GraCoil • Rifle GraCoil

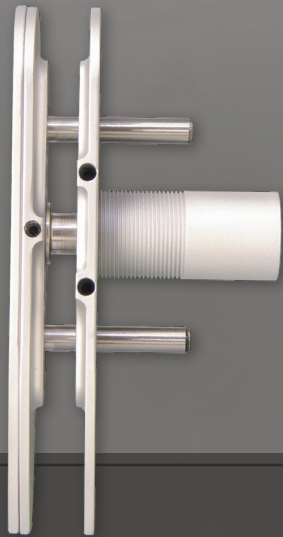
The GraCoil is a compression butt plate with an adjustable tension setting and adjustable pad plate. Adjustments for length, drop, and rotation allow factory stocks to fit any shooter's style.

Tension will adjust from 14 lb. to 70 lbs. with a maximum stroke of $\frac{5}{16}$ " which produces a hardly detectable response time, with no distractions between shots. Moving parts slide on Teflon® liners for a smooth and trouble-free motion.

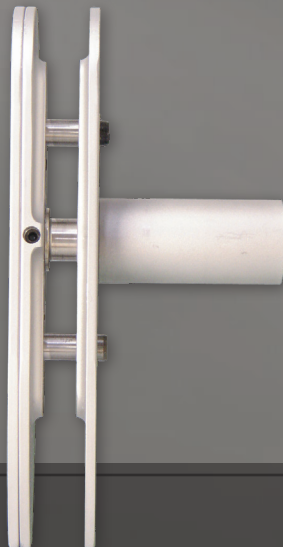
The GraCoil LP offers the same features as the standard GraCoil, but with the added feature of a "length of pull" adjustment, which allows for the stock length adjustment up to 1".

The GraCoil adds 1" to the stock length, and requires the stock to be shortened in most cases. It's construction is all aluminum and stainless steel and comes complete with screws and wrenches. It uses very little lubrication and no maintenance is required.

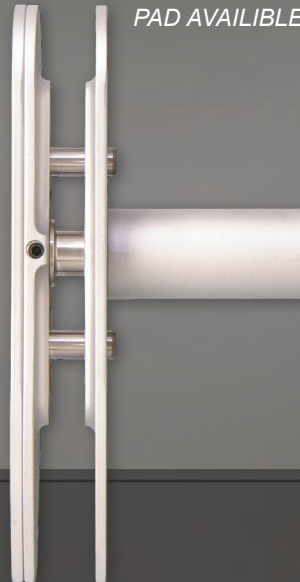
FACTORY INSTALLATION AVAILABLE
PAD AVAILABLE BUT NOT INCLUDED



GC15LP



GC15S



GC15R



GraCoil LP
on stock

RECOIL NEVER

THE GRACOIL FOR CENTERFIRE RIFLES

The GraCoil for rifles has the same features as the original GraCoil for shotguns. Its features include an adjustable pad plate, adjustable tension setting for the rate of compression and only $\frac{5}{16}$ " maximum stroke length. The eye relief to scope is not affected by these adjustments.

The GraCoil rifle unit is a scaled down version of the shotgun unit. It was created to fit smaller rifle stocks. The GC15R has a stronger compression rate to accommodate the fast and heavy recoil of the larger rifles. The pad plate is drilled and tapped for standard recoil pads. It's also recommended for heavier recoiling 3" and 3½" magnum shotguns.

PAD AVAILABLE BUT NOT INCLUDED



GraCoil R



*GraCoil LP
pad plate extended $\frac{1}{2}$ "*



*GraCoil LP
pad plate lowered and extended*

R FELT BETTER

ADJUSTABLE BUTT PLATE

"LENGTH OF PULL" ADJUSTMENT

The "length of pull" adjusts in or out $1\frac{1}{8}$ inches. The pad plate moves up or down $1\frac{1}{2}$ inches and can rotate to any comfortable position "toe in" or "toe out". A positive locking system holds the adjustments in place without slipping. When the unit is closed, it adds $\frac{9}{16}$ inches to the stock length.

Available in two models.

MODEL 575S - Standard Butt Plate

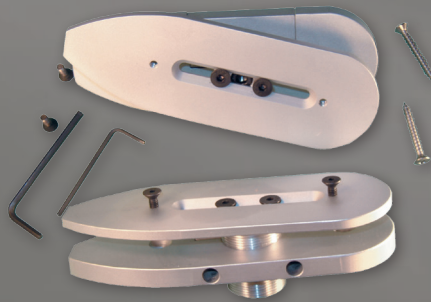
The Standard Butt Plate unit is for pump action and break open shotguns.

MODEL 575A – Auto Butt Plate

The Auto Butt Plate is for semi-automatic shotguns with a long action spring tube such as Remington 1100, 11-87 & Beretta 303

PAD AVAILABLE BUT NOT INCLUDED

**Use the Graco
LOP measurement
tool to accurately
measure your
length of pull.**



575 Adjustable Butt Plate Hardware



575S extended



575S extended,
lowered and rotated



575S lowered



575S lowered and rotated



**You thought shooting
was fun before,
wait until your scores go up!**

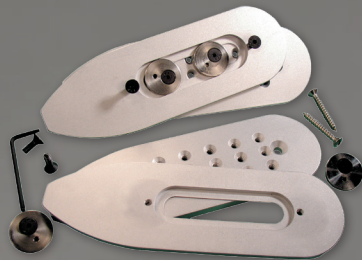
ADJUSTABLE PAD PLATE

THE ULTIMATE PAD PLATES

The 580 is the same style adjustable pad plate as used on our GraCoil system. Two eccentric cams provide a nearly unlimited range of adjustments for height, canter and rotation. The 580 pad plate locks securely to hold your settings. Fifteen mounting holes allow you to position the recoil pad exactly right, so you get the best possible gun fit.

The plate will add $\frac{3}{8}$ inch to the stock length and comes complete with screws and hex wrenches.

MODEL 580
PAD AVAILABLE BUT NOT INCLUDED

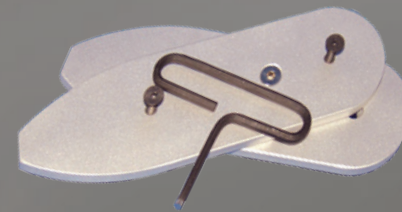


*580 Adjustable Pad
Plate Hardware*

The 585PA is a single point pad adjuster that allows quick and simple pad adjustments through the recoil pad. This does require cutting an access hole in the recoil pad at the time of installation. The 585PA will provide a full range of pad adjustment and comes with a non-slip material for a secure lock-up.

The plate will add $\frac{3}{8}$ inch to the stock length and comes complete with screws and hex wrenches.

MODEL 585PA
PAD AVAILABLE BUT NOT INCLUDED



*585PA Adjustable Pad
Plate Hardware*



*580 Adjustable Pad
Plate lowered*



*580 Adjustable Pad
Plate lowered*



*580 Adjustable Pad Plate
lowered and rotated*

TOOLING ACCESSORIES FOR INSTALLATIONS

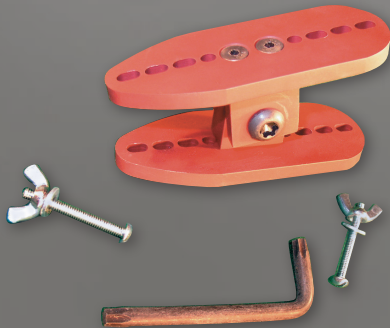
Universal Fitting Fixture • Transfer Plate • Drill Fixtures

UNIVERSAL FITTING FIXTURE

Different than most other "pad sanding fixtures", this unit has a 1 1/2" wide base plate that will not tilt when sawing or sanding. The top plate is 4" long with a series of small slots to accept #10 screws, which hold hardware type plates for band sawing, belt sanding or disc sanding. Being able to sand close to your layout lines will make final finishing easier without the heat build up and dust. Fitting and finishing recoil pads in the same way is quick and easy. Using the included #10 screws and Torx wrench makes setting the 'toe angle' and 'heel angle' easy and keeps it secure with a positive locking system.

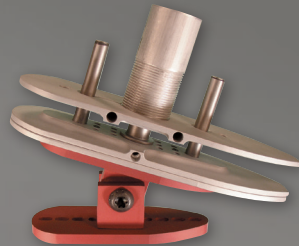
Complete with mounting screws and Torx wrench.

Model FF 15 - Universal Fitting Fixture



Universal Fitting Fixture

Universal Fitting Fixture with GraCoil



Universal Fitting Fixture with Pad



TRANSFER PLATES

The adjustable comb transfer plate marks the precise location for the bushing holes in the comb piece - quickly and easily.

Before permanently anchoring the base plate in the pocket you've cut in the stock, insert the transfer plate with the points of the two hardened steel punch screws facing up. Position the comb piece on the stock and press down hard or rap it sharply with the heel of your hand to dimple the exact hold locations.

The depth of the scribe marks can be adjusted by raising or lowering the punch screws with the included wrench. The transfer plate has a tapped hole to accept the screw-in plastic knob for easy plate removal.

Plates are anodized aluminum with harden steel punches and comes with a plastic removing screw. Each kit includes two adjustable punch screws, Allen wrench, and a removal knob. Plates are red or blue in color, depending on model.

350TP, Dimensions: 1/4" x 1" x 3 1/2"

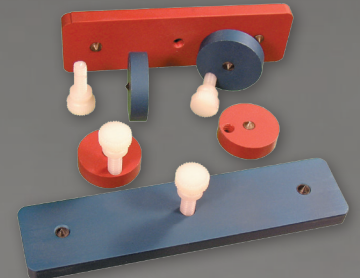
425TP, Dimensions: 1/4" x 1" x 4 1/4"

870TP, Dimensions: 1/4" x 7/8" round

1000TP, Dimensions: 1/4" x 1" round



Transfer Plate in use



Transfer Plates

Note: The two dimples in the top piece of wood, mark the precise location for the bushing holes.

FACTORY INSTALLATIONS

At Graco Corporation we not only manufacture our products, we also install them. The skilled craftsmen in our Customs Department offer installations and modifications of shotguns daily. We provide the closest fit of metal to wood, finished and polished. Please call for questions, turn around time, price and delivery.

Information that we need

1. Name & shipping address
2. Daytime phone number
3. Type of hardware
4. Type of recoil pad
5. Length of pull measurement*
6. Right or Left hand shooter

* In some cases we will need the receiver with trigger.

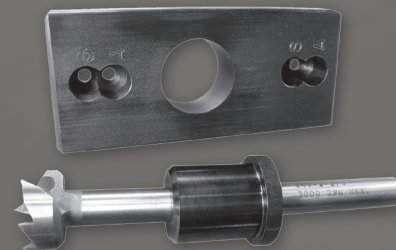
DRILL FIXTURES

Using drill fixtures when working on gun stocks is important for several reasons. First, is the safety of not drilling out the side of your stock or cracking it when a drill hangs up in a cross hole. When using the proper drill fixture for the job, everything looks and fits better. Using the drill bushing keeps the wood bit straight and free of grabbing.

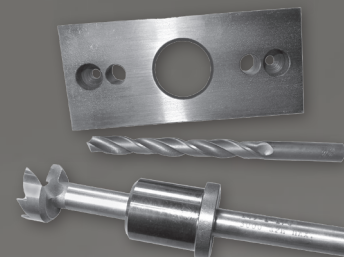
Model DFBP - Drill Fixture for the 575 Butt Plate

This drill fixture works for two models, the 575S and the 575A. This fixture has four mounting screw holes, two holes marked "A" and two holes marked "S". Once the screw holes have been drilled into the stock for mounting the butt plate, the same holes can be used to hold the fixture, as well as provide the correct position for drilling.

Unit comes complete with steel plate, $1\frac{1}{8}$ " multi-spur bit and drill bushing.



DFBP Drill Fixture

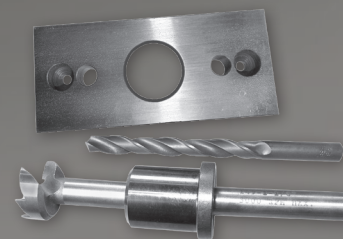


DF15 Drill Fixture

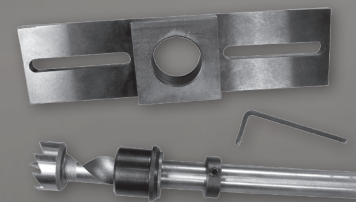
Model DF15 - Drill Fixture for the GC15S & GC15LP GraCoil

This drill fixture works for the GraCoil S and LP models, the only difference is the hole depth. Once the stock has been cut off and the mounting screw hole has been drilled, then the drill plate can be mounted. Now you are ready to drill the $1\frac{1}{8}$ " diameter hole to required depth and then drill the $\frac{3}{8}$ " hole in two places to their required depth. Remove the fixture, fit the plate and you are done.

Unit comes complete with steel plate, $1\frac{1}{8}$ " multi-spur bit, $\frac{3}{8}$ " drill bit and drill bushing.



DF15R Drill Fixture



RD78 Drill Fixture

Model DF15R - Drill Fixture for the GC15R GraCoil

This drill fixture works the same as the DF15 drill fixture, the only difference being the location of the holes. A rifle stock is smaller than a shotgun stock so this requires a different hole pattern.

Unit comes complete with steel plate, $1\frac{1}{8}$ " multi-spur bit, $\frac{3}{8}$ " drill bit and drill bushing.

Model RD78 - Drill Fixture for Recoil Reducers

This is the best fixture to have around if you are installing recoil reducers. The model RD78 is very easy to mount to any gun stock. Simply find the location you want to drill and tighten the fixture down. If you need to drill across a draw bolt hole or old reducer hole, then you may need to plug it temporarily for drilling. Drill through the fixture until the bit goes through the guide block, then start using the drill bushing to guide the drill bit. Use the stop collar to hold the depth of the hole.

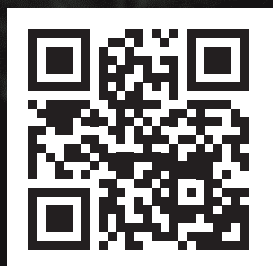
Unit comes with steel plate, $\frac{7}{8}$ " multi-spur bit, drill bushing and stop collar.



RD78 Drill Fixture in use

GRACO

CORPORATION



www.graco-corp.com

104 White Oak Drive • P.O. Box 940 • Gravette, AR 72736

Phone: (479) 787-6520 • Fax: (479) 787-6590



**PROUDLY
MADE IN
THE USA**

FOR THE SHOOTER THAT DEMANDS THE BEST